

November 2015

## INSIDE THIS ISSUE

Counselor Guide Now Available 1

Important Announcements 2

Of Interest 3

Federal and State Financial Aid Applications Monthly E-News 4

OSFA Outreach Team's Phone Numbers Calendar of Events 5

OSFA Philosophy 6

## Counselor Guide Now Available

The Florida Counseling for Future Education Handbook has been released for the 2015-2016 school year. This comprehensive guide provides resources to assist students in planning for postsecondary education in Florida.

It includes information regarding:

- Promotion requirements
- Middle/High school progression requirements
- Career planning
- Diploma designations
- Financial aid
- Postsecondary programs
- FLDOE contact information

Take time to review this important guide located on the FloridaShines [website](#) / Distance Learning and Student Services Staff.

# IMPORTANT ANNOUNCEMENTS



## NT4CM COMING TO 9 REMAINING LOCATIONS NEAR YOU IN 2015

Gainesville, Palm Beach County, Polk County,  
Orlando, Broward County, Chipley,  
Quincy, Sarasota/Manatee County and Ave Maria

The National Training for Counselors and Mentors (NT4CM) is an event you do not want to miss. In addition to the topics below, the day of training will also allow time to network with other counselors.

- Federal and state financial aid options
- Explanation of the expected family contribution
- Counseling undocumented students
- Searching for scholarships
- Resources

Go to <https://www.osfaffelp.org/osfatraining/> to register for an event near you. There is no charge for this training.

**November 4, 2015**  
**Gainesville, Florida**  
Santa Fe College  
NW Campus - Room S-326  
3000 NW 83<sup>rd</sup> Street, Gainesville, FL  
8:30 A.M. - 2:00 P.M.  
Breakfast will be provided

**November 12, 2015**  
**Orlando, Florida**  
Valencia College - West Campus  
Building 8 - Special Events Center  
1800 South Kirkman Road  
Orlando, Florida 32811  
8:00 A.M.- 2:15 P.M.

**November 19, 2015**  
**Quincy, Florida**  
IFAS North Florida Research and  
Education Center  
155 Research Road  
Quincy, Florida 32351  
8:30 A.M. - 2:45 P.M.

**November 6, 2015**  
**Palm Beach County**  
Palm Beach State College  
Building CE Room 119  
Lake Worth Campus  
4200 Congress Avenue  
Lake Worth, FL 33461  
8:30 A.M. - 2:45 P.M.

**November 13, 2015**  
**Broward County**  
Keiser University - Pembroke Pines  
1640 SW 145th Avenue  
Pembroke Pines, Florida 33027  
8:30 A.M. - 2:45 P.M.

**November 20, 2015**  
**Sarasota/Manatee County**  
University of South Florida -  
Sarasota-Manatee  
Selby Auditorium  
8350 North Tamiami Trail, C107  
Sarasota, Florida 34243  
8:00 A.M. - 2:15 P.M.

**November 6, 2015**  
**Polk County**  
Jim Miles Professional Development  
Center  
Cypress Room  
4270 Wallace Road  
Lakeland, Florida 33812  
8:00 A.M. - 2:15 P.M.

**November 13, 2015**  
**Chipley, Florida**  
Panhandle Area Educational Consorti-  
um Office  
753 West Boulevard  
Chipley, Florida 32428  
8:30 A.M. - 2:45 P.M.

**December 3, 2015**  
**Ave Maria, Florida**  
Ave Maria University  
Bob Thomas Student Union,  
Private Dining Room  
5050 Ave Maria Boulevard  
Ave Maria, Florida 34142  
8:30 A.M. - 2:45 P.M.

# OF INTEREST



School counselors requested a FAFSA bookmark and Bright Futures poster to help get the word out about financial aid. You suggested and we listened.



Need money for college?  
Federal financial aid may help!

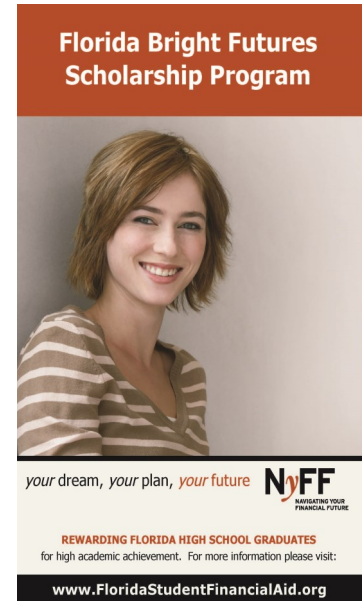
[www.FAFSA.gov](http://www.FAFSA.gov)

Navigating Your Financial Future now offers the following new resources to aid your financial aid planning for students and parents:

- FAFSA Bookmark
- Bright Futures poster
- Financial Aid Night Toolkit
- FAFSA Lab Toolkit
- Financial Aid audio presentation (located on the Training tab)

You can find these items on our website

[www.NavigatingYourFuture.org](http://www.NavigatingYourFuture.org) by choosing the *Resources* tab.



## NEW! NET PRICE CALCULATOR FOR LOW-INCOME STUDENTS AND FAMILIES

Students of low-income families often do not believe they are able to attend college because of the cost of attendance. They are surprised to find out that many schools offer financial aid such as the Pell Grant to help offset the cost. To help students research and compare schools BEFORE applying, a new tool is available to make the process easier and provide options for low-income families to consider.

Based on students' answers to questions about demographics such as parental marital status, number of people in household, free/reduced lunch participant, the calculator generates the sticker price, total aid and net price of college attendance.

Where can you find this wonderful FREE resource? [Pell.CollegeAbacus.org](http://Pell.CollegeAbacus.org)

## FAFSA (FEDERAL APPLICATION)

The Free Application for Federal Student Aid (FAFSA) will have important changes beginning in the fall semester of 2016.

- 1) FAFSA will open **October 2016** instead of January 1, 2017.
- 2) FAFSA will also allow use of **prior-prior year tax returns**. One of the largest roadblocks for students completing the FAFSA is that parents haven't filed their tax return yet. With prior-prior year return information allowed, that will no longer be an issue! Previously, students completing the 2016 FAFSA will need to report information from the 2015 tax return. With the new change, students completing the 2017 FAFSA can report the 2015 tax return information.



What advice should you give a family if their financial situation has drastically changed since the last filed tax return?

Refer them to the financial aid office of the school the student plans to attend and have them provide documentation to support the situation. The school's financial aid office will review and provide professional judgment to determine if an adjustment is necessary to the federal financial aid form.

## FFAA (STATE APPLICATION)

The Florida Financial Aid Application (FFAA) will open on December 1 and closes on August 31. This application is for the Scholarships for Children and Spouses of Deceased or Disabled Veterans, the José Martí Scholarship Challenge Grant, Rosewood Family Scholarship and the Florida Bright Futures Scholarship Program.

Use this month to remind seniors that to be considered for the Bright Futures Scholarship program they must complete this application by high school graduation, and no later than August 31, **even if they plan to go out of state** to attend college.

Why?

Some students may attend the first year of college out of state but then decide to return to Florida in the second year. Eligible students may reinstate their scholarship within 2 years of graduation and begin receiving funds.



COLLEGE

## Monthly E-News for Students

The November issue of the monthly E-News for students is now available.

Print, download or e-mail this financial well-being newsletter monthly as an additional resource for your students.

The E-News provides important information pertaining to preparing for college access.

- Scholarship searches
- State scholarships and grants
- Money management tips

Visit

[www.NavigatingYourFuture.org](http://www.NavigatingYourFuture.org) and select the **RESOURCES** tab to locate online publications available to you.



# CALENDAR OF EVENTS

## OSFA'S OUTREACH TEAM CONTACT INFORMATION

Lori Auxier  
Director of Outreach Services  
561-389-6346, office  
[Lori.Auxier@fldoe.org](mailto:Lori.Auxier@fldoe.org)

Isabel Acevedo  
Outreach Representative  
305-364-3062, office  
305-819-0652, fax  
[Isabel.Acevedo@fldoe.org](mailto:Isabel.Acevedo@fldoe.org)

Robin Blank-Pernice  
Outreach Representative  
561-357-4837, office/fax  
[Robin.Blank@fldoe.org](mailto:Robin.Blank@fldoe.org)

Pedro "Pete" Hernandez  
Outreach Representative  
850-245-1821, office  
850-488-3612, fax  
[Pedro.Hernandez@fldoe.org](mailto:Pedro.Hernandez@fldoe.org)

Gerri McCormick  
Outreach Representative  
407-207-4944, office/fax  
[Gerri.McCormick@fldoe.org](mailto:Gerri.McCormick@fldoe.org)

Stephanie Rosh  
Outreach Representative  
727-771-4397, office/fax  
[Stephanie.Rosh@fldoe.org](mailto:Stephanie.Rosh@fldoe.org)

Jan Smith  
Manager of Outreach Services  
850-245-1822, office  
850-488-3612, fax  
[Jan.Smith@fldoe.org](mailto:Jan.Smith@fldoe.org)

### NT4CM Events

(see page 2 for events remaining in 2015)

### Florida Charter School Conference

November 10-12  
Caribe Royale Hotel  
Orlando

The Florida Department of Education will be closed for holidays:

November 11            Veteran's Day  
November 26-27      Thanksgiving Holiday



## THE OSFA PHILOSOPHY



The Office of Student Financial Assistance (OSFA) has the ability to offer its partners and customers something few public agencies can, the ability to shape OSFA programs and services based on their specific needs and concerns. OSFA provides financial aid workshops, publications, prompt services for participants, and helps fund scholarship and grant programs. If a participant has a problem or suggestion, the OSFA management team listens and makes every effort to implement a solution that meets their needs. Public dollars deserve the kind of accountability OSFA provides in financing education.

The News to Know for Counselors is now available on the Counselors page of the website [www.FloridaStudentFinancialAid.org](http://www.FloridaStudentFinancialAid.org). Previous editions may be viewed on the [Archives](#) page.

### **Contact OSFA**

Tallahassee, FL

Toll-free State Programs: **1-888-827-2004**

E-mail: [OSFA@fldoe.org](mailto:OSFA@fldoe.org)

Toll-free Federal Loans: **1-800-366-3475**

Locally: **850-410-5200**

E-mail: [OSFAStudentLoans@fldoe.org](mailto:OSFAStudentLoans@fldoe.org)

Visit our website at

[www.FloridaStudentFinancialAid.org](http://www.FloridaStudentFinancialAid.org)

[Click here](#) to contact an OSFA Outreach Representative about your school's needs.